



Annual Report 2020/21

2020/21

目錄 Contents

- 01 Introduction
簡介
- 03 Motto, Vision and Mission
- 05 Messages
- 10 Road to SFU
邁向聖方濟各大學
- 13 Learning and Teaching
教與學
- 22 Community Outreach and Promotional
Campaign
社區推廣與宣傳活動
- 27 Research and Scholarly Activities
研究及學術交流
- 34 Collaboration
協作與交流
- 37 Student Activities and Events
學生活動與事務
- 44 Financial Statistics and Donations
平穩漸進 福杯滿溢
- 48 Staff Development and Enrichment
員工培養與能力提升
- 50 Facts and Figures
數據與統計

01



INTRODUCTION

簡介

INTRODUCTION OF THE YEAR

Under the shade of social instability and the menace of the outbreak of the COVID-19 pandemic, 2020/21 was a tough year for the entire city and the globe. Despite these challenges, all members of Caritas Institute of Higher Education (CIHE or the Institute) have strived their best in keeping the Institute proceed forward, reaping fruitful results in the 2020/21 academic year and moving the Institute one more step closer in its journey to establish Saint Francis University.

MOTTO, VISION AND MISSION

”
Ad Destinatum Persequor
自強不息
“

I do not consider that I have made it my own; but one thing I do, forgetting what lies behind and straining forward to what lies ahead, I press on toward the goal for the prize of the upward call of God in Christ Jesus.

<Phil 3:13 - 14>

我並不以為我已經奪得，我只顧一件事：即忘盡我背後的，只向在我前面的奔馳，為達到目標，為爭取天主教在基督耶穌內召我向上爭奪的獎品。

<斐 3:13-14>

Vision

The vision of CIHE is to nurture graduates who are not only **professionally well-trained and academically well-educated**, but who can also **contribute to the social and moral well-being of society**.



Mission

The mission of the Institute is embodied in our three-pronged approach to add value and stay relevant to young people:

- **Professional Development** – Readiness for a professional career enhances our students' chances of upward mobility and hope in life. Wherever appropriate, our programmes aim for graduate professional recognition on par with counterparts from publicly funded institutions.
- **Sound Education** – Through getting programmes accredited by HKCAAVQ, we strive to adopt the best practices in organisational quality assurance and enhancement, and thereby to institutionalise continuous self-improvement.
- **Positive Life Values** – Our motto of “*Ad Destinatum Persequor*” (自強不息) is to inspire learners from different starting points to stride unceasingly for self-enhancement. Inculcating this spirit of life-time learning will put them in good stead in a future, where knowledge will get superseded quickly by fast-changing technological and social changes.





Message from Chairman of Board of Governors

CIHE has consistently been providing whole person education to young people and encouraging students to give back to their families and society.

Upholding our missions of quality academic education and professional development for our students, the choices of programmes offered by CIHE have gradually expanded to 12 Bachelor's Degree programmes, and 2 sub-degree programmes. CIHE's first Master's degree programme, the Master of Corporate Governance programme, has attained successful academic accreditation by the Hong Kong Council for Accreditation of Academic and Vocational Qualifications (HKCAAVQ) and would be launched in January 2022.

The goal of CIHE is to become Saint Francis University. Sparing no efforts, the Institute is mid-way towards this goal, with the successful attainment of self-accrediting status granted by the HKCAAVQ in two of the three Programme Areas required for the Private University Title. These two areas are General Business Administration and Social Work.

I sincerely hope that graduates of CIHE will not only become academically and professionally well prepared; but also persons with good morals to contribute to the social wellbeing of our community.

His Eminence John Cardinal TONG

Apostolic Administrator of the Diocese of Hong Kong
Chairman, Board of Governors

Message from Chairman of Council

Giving no prior warning, the pandemic brought unprecedented disruptions to our lives in 2020 as it did to people around the world. Without compromising on teaching quality and safety of teachers and students, the Institute overcame the adversities by determination to adhere to our educational commitment, teamwork and adopting the mixed mode of teaching, learning, and assessment.

With the concerted efforts of staff under the leadership of the President, CIHE made a number of significant achievements in the reporting period, which brought us closer to the goal of becoming Saint Francis University:

1. Our successful Programme Area Accreditation (PAA) in Social Work by the HKCAAVQ granted the Institute self-accrediting status in the second of the three programme areas required for the University title.
2. Notwithstanding the continuous decline in HKDSE student population in Hong Kong, the Institute continued to attract an increase in both student applications and enrolment in 2020/21, reflecting the increasing public recognition of our educational quality, care for students and staff, and programme relevancy to societal needs
3. The Institute's programme launch attained many "firsts" in 2020/21—Bachelor of Arts (Honours) in Translation Technology (BATT) being the first-of-its-kind in Hong Kong; Bachelor of Science (Honours) in Artificial Intelligence (BScAI) programme being the first comprehensive Artificial Intelligence (AI) degree programme in the self-financing sector; and Bachelor of Entrepreneurial Management (Honours) in Design Business (BEMDB) programme being the first-of-its-kind in Hong Kong as well as the first self-accredited degree programme of CIHE under our self-accrediting status in General Business Administration.
4. Another breakthrough was the successful accreditation of our first Master's degree programme, namely Master of Corporate Governance Programme by HKCAAVQ, extending our education offering to Level 6 of the Hong Kong Qualifications Framework (HKQF), furthering our contribution to enhancing the chances of upward mobility and hope in life of young people.
5. With the support of the Research Grants Council (RGC), the Techno-Humanities Research Centre was established with the Institutional Development Scheme Research Infrastructure Grant of HK\$3.94 million. As the first-of-its-kind in Hong Kong, the Techno-Humanities Research Centre aims to help advance Hong Kong as a hub in this new research dimension.



These achievements did not come by chance; they were the fruit of the support from stakeholders of the CIHE community at large as well as the hard work of our staff and students, and their identification with the values of CIHE.

I would therefore like to take opportunity to record my profound gratitude to the Board of Governors and members of the Council, donors, staff, students, alumni and friends for their continuous support. We shall continue to work hand in hand towards becoming Saint Francis University.

Denis CHANG

CBE, QC, SC, JP, Hon. LLD
Council Chairman





President's Overview

COVID-19 has brought unprecedented disruptions to the world for over a year by now. Against all the adversities of this long pandemic, the Institute never faltered but kept moving forward in academic accreditation, programme development, research, student recruitment and scholarship, including the following initiatives:

Academic Accreditation

In 2020/21, CIHE successfully achieved the self-accrediting status awarded by the Hong Kong Council for Accreditation of Academic and Vocational Qualifications (HKCAAVQ) for its second programme area of Social Work. This follows its first such area of General Business Administration and takes CIHE another big step closer towards our goal of attaining the university title.

In parallel, CIHE also attained the milestone of Initial Evaluation by HKCAAVQ for Level 6 of the Hong Kong Qualifications Framework (HKQF) with approval to offer Master's degree programmes. CIHE's first Master's degree programme, Master of Corporate Governance Programme, was successfully accredited in 2020/21 for launch in January 2022.

Launching New Programmes

CIHE and CBCC launched a variety of new programmes in 2020/21 to meet the needs of society for critical professionals, and students for articulation pathways:

Bachelor Degree Programmes:

- Bachelor of Science (Honours) in Physiotherapy (BScPT)
- Bachelor of Education (Honours) in Early Childhood Education (BEdeCE)
- Bachelor of Science (Honours) in Artificial Intelligence (BScAI)
- Bachelor of Arts (Honours) in Translation Technology (BATT)
- Bachelor of Entrepreneurial Management (Honours) in Design Business (BEMDB)



Increase of Intake Quota

The intake quota was increased from 90 to 120 for *Bachelor of Social Work (Part-time conversion)* and from 60 to 90 for *Higher Diploma in Social Work (Part-time)*, making CIHE one of the largest providers of Social Work Degree and Sub-degree programmes in Hong Kong.

Enhanced Research Capabilities

CIHE's research capabilities were recognised with a total of HK\$202.5 million of grants and donations received for research projects (as of 31 March 2021) from the Research Matching Grant Scheme (RMGS) and donors. CIHE was the only self-financing institution which reached HK\$50 million of the matching floor on the dollar-for-dollar matching basis for RMGS.

Establishment of Techno-Humanities Research Centre

With the support of the Research Grant Council, CIHE established Hong Kong's first Techno-Humanities Research Centre in January 2021.

Growing Student Population

Despite the fragile environment, CIHE achieved a record-breaking enrolment of 2,812 students in 2020/21, representing a 20% increase over 2019/20.

Enhancement of Life Education

Whole person formation of students was enhanced through the review of Life Education curriculum and mapping it to all degree programmes.

All the above remarkable achievements did not come easy during the COVID-19 pandemic. We are indebted to the leadership of our Board of Governors and Council, generous support from our donors and alumni, and commitment of our staff. I would like to take this opportunity to extend my heartfelt gratitude to all of them. We shall continue to strive for advances in the years to come.

Dr Kim MAK, BBS, JP

The President

ROAD TO SFU 邁向聖方濟各大學

CIHE has the aspiration for establishing as the Saint Francis University. In the 2020-21 academic year, the Institute made a leap forward in this endeavour with achievements as summarized below.

Progress of Private University Title Entitlement

In accordance with the Education Bureau's document "*Revised Roadmap with Criteria for Acquiring University Title by Post-secondary Colleges Registered under Post Secondary Colleges Ordinance (Cap. 320)*," certain requirements shall be fulfilled before obtaining the university title.

As of 31 March 2021, the progress of CIHE in earning the Private University Title (PUT) is as follows:



Criteria		Achievement
1.	have demonstrated a certain level of research capability by having successful applications under publicly-funded research-related schemes;	✓
2.	have a minimum student enrolment of 1,500 (full-time equivalent) at degree level for the past two consecutive academic years immediately preceding an application for university title	✓





PAA Achievements

Fortifying its position as Hong Kong's largest provider of social work degree and sub-degree programmes, CIHE was granted the self-accreditation status in social work at degree level, after successfully undergoing Programme Area Accreditation (PAA) by Hong Kong Council for Accreditation of Academic and Vocational Qualifications (HKCAAVQ) in November 2020. This is the second of the three PAAs required for the journey towards the private university title.

The Institute had also been granted PAA status in the programme area of General Business Administration for five years, which means its Bachelor of Business Administration (Honours) [BBA] Programme can be subject to self-accreditation via internal quality assurance. A self-reaccreditation exercise of the BBA Programme was conducted on 21 April 2022, extending its validity period to 30 June 2025.

Commendation from HKCAAVQ

As recognition of our tireless pursuit of excellence and enhancement in academic and research quality, as well as our commitment to offering programmes that meet society's need for talent, CIHE was honoured to be the awarded self-financing higher education institution by the HKCAAVQ at its first Appreciation and Commendation Ceremony on 24 June 2021. This ceremony aimed to commend institutions and organisations for their contributions to the quality assurance of the higher education sector. Awardees include operators with PAA status.

The award also signifies CIHE's commitments in enhancing its teaching and research qualities that would be required for the Institute to earn the status of a private university.

03



LEARNING AND TEACHING

教 與 學

Processing further when challenged

逆空高飛 更創新高

Despite some turbulence surrounded both the city and the globe, CIHE continued to reach higher ground in its development and make achievements academically.

Our First Master Programme

MASTER OF CORPORATE GOVERNANCE

by Rita Tong Liu School of Business and Hospitality Management

Commencement in January 2022



① First Master's Degree

In January 2021, CIHE made a milestone achievement in its academic development via the successful accreditation of its first Master's Degree, namely, the Master of Corporate Governance (MCG), after undergoing Initial Evaluation by the HKCAAVQ at Level 6 of the Hong Kong Qualifications Frameworks (HKQF). The MCG would be launched in the upcoming academic year; the Institute thus made a great leap forward by extending its operation to HKQF Level 6.

2 Five New Bachelor's Degree & Two New Higher Diploma

Following the successful accreditation last year, the Institute launched five new Bachelor's Degree programmes in this academic year. These programmes are:



Bachelor of Science (Honours)
in Artificial Intelligence (BScAI)



Bachelor of Arts (Honours) in
Translation Technology (BATT)



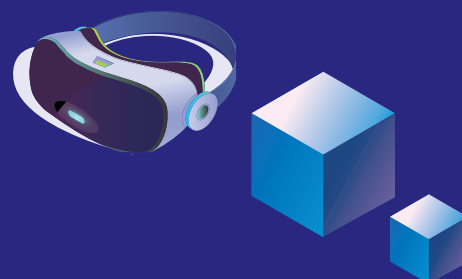
Bachelor of Education (Honours) in
Early Childhood Education (BEdECE)



Bachelor of Science (Honours)
in Physiotherapy (BcSPT)



Bachelor of Entrepreneurial
Management (Honours) in Design
Business (BEMDB)



The BScAI is the first comprehensive Artificial Intelligence degree programme in the self-financing sector, while the BATT is the first of its kind in Hong Kong, riding on the application of the latest technology to translation that allows the handling of millions of web pages or 150 languages. The BEMDB is the first self-accredited Bachelor's Degree programme of the Institute.

In this academic year, the distinctive articulation pathway between CIHE and its sister institute, Caritas Bianchi College of Careers (CBCC), was further strengthened with the successful accreditation of two new higher diploma programmes, namely



Higher Diploma in Health Care (HDHC)



Higher Diploma in Film and Media Production (HDFMP)

In addition, CIHE and CBCC successfully underwent re-accreditation of 5 extant programmes by the HKCAAVQ this year.

3 Inauguration of Bachelor of Science (Honours) in Physiotherapy (BScPT)

With the successful launch of five new Bachelor's Degree programmes, the respective schools held various ceremonial events in celebrating the inauguration of these programmes. One of these events was the inauguration ceremony of the BScPT Programme held on 17 September 2020. It was officiated by the President, Dr Kim MAK, the Dean of School of Health Sciences, Prof Eric CHAN and the BScPT Programme Leader, Prof Arran LEUNG. Around 50 new students and the respective academic staff gathered and inaugurated the 8,000 square-foot Physiotherapy laboratories along with the Programme.



4 Professional Accreditations

Apart from earning fruitful result from being academically accredited by the HKCAAVQ, the high-standard programmes offered by the Institute are also highly recognised by the professional bodies from various industries. In this academic year, the Institute was granted various professional accreditations as below:

- The Master of Corporate Governance (MCG) had been granted Collaborative Course Agreement (CCA) by Hong Kong Chartered Governance Institute (HKCGI) for a period of three years from January 2022 to December 2024. Graduates of the Programme would be eligible for full exemption from the examinations of Chartered Governance Qualifying Programme. The CCA Signing Ceremony was held on 12 October 2021.



- The professional qualification recognition for the Bachelor of Social Work (Part-time) programme was extended for a validity period of four years by the Social Workers Registration Board. With the approval of the Social Workers Registration Board, the Higher Diploma in Social Work (FT & PT) has also been granted an extension of its validity period of professional recognition in licensing for its graduates.

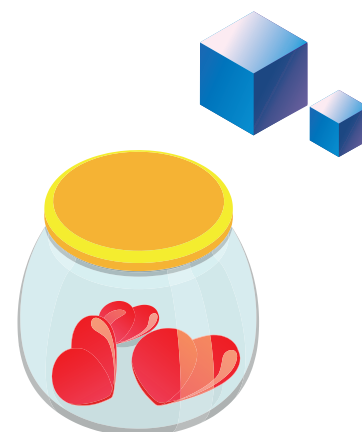


5 Continuation of being the city's largest social work training school

With ongoing support from foundations and our stakeholders, the Felizberta Lo Padilla Tong School of Social Sciences remains Hong Kong's largest provider of undergraduate and higher diploma programmes in social work.

Each year, around 450 young men and women embrace the spirit of "learn to love" and "love to learn" within the school. They dedicate themselves to serving with compassion, intellect, action, and hope. Overall, over 1,000 young individuals have been nurtured in the spirit of Saint Paul, teaching them to serve willingly, illuminate the lives of others, and help those in need overcome adversities.

The part-time Bachelor of Social Work programme, tailored for social work sub-degree graduates seeking self-improvement, has become the leading conversion programme.





6 Student development under the pandemic

The COVID-19 pandemic has had a profound impact on the world, leading to a significant disruption in face-to-face academic and student development activities. However, despite the challenges posed by this adversity, the dedicated members of the Institute made every effort to ensure that teaching and student development activities continued as smoothly as possible. They embraced innovation and sought alternative solutions to ensure that learning activities were not halted. By adapting to the new circumstances, the Institute implemented various measures to maintain the continuity of teaching and student development.

These efforts included utilising technology and virtual platforms to facilitate remote learning, exploring interactive and engaging online teaching methods, and implementing creative approaches to keep students actively engaged in their education. Despite the unprecedented circumstances, the Institute's commitment to providing quality education and fostering student development remained steadfast. The dedication and resilience of the Institute's members ensured that the learning journey continued, albeit in a different format, thereby minimising the disruption caused by the pandemic.





Off-the-campus learning and teaching

In order to address the unprecedented challenges, the committed staff members from various schools and departments have developed innovative and interactive teaching approaches, both in physical and virtual realms. Throughout the past year, real-time online teaching and learning, as well as a dual mode of face-to-face combined with online teaching and Zoom seminars, have been implemented as alternative solutions by schools and departments.

In addition to the regular lectures, seminars, and teaching activities, several other student learning and development initiatives were also emphasised.

- The Rita Tong Liu School of Business and Hospitality Management (SBHM) took proactive measures to provide a range of online activities and opportunities for enhancing interpersonal skills. These initiatives were offered as alternatives to the face-to-face activities of the SBHM Student Development Programme, which had to be suspended due to the circumstances. The SBHM ensured that students could still engage in meaningful learning experiences and develop essential skills through virtual platforms and online interactions.
- Simultaneously, the SBHM organised Zoom seminars for students enrolled in the Business Research Project module. These seminars focused on the utilisation of research tools such as SPSS, STAT, and CSMAR. By conducting these online sessions, the SBHM aimed to equip students with the necessary knowledge and skills to effectively utilise these research tools for their projects.
- The Felizberta Lo Padilla Tong School of Social Sciences (SSS) created new opportunities by incorporating hybrid learning approaches that combined elements from both the real and virtual worlds. As part of these initiatives, six universities located in Canada, Australia, Singapore, Mainland China, and Taiwan have confirmed their offers of placement opportunities to SSS students. This collaboration provides students with valuable international exposure and the chance to gain practical experience in diverse social science settings across different countries..

The adoption of off-campus learning has opened a new goldmine of valuable opportunities, broadening students' exposure to diverse professional practices within different cultural and institutional contexts. This approach has proven to be particularly beneficial in enhancing interpersonal communication, cultural sensitivity, self-reliance, and problem-solving skills. As global citizenship continues to gain importance in our dynamic world, off-campus learning plays a crucial role in preparing students to navigate and thrive in an increasingly interconnected and diverse global society.

Visits and placement opportunities

Despite the pandemic halting the development and movement of certain industries, the staff of the Institute made great efforts to secure valuable placement opportunities and organise various visits and exchanges with industries. Their aim was to ensure that students were well-equipped with the latest skills and knowledge required by the market.



- The SBHM secured placement opportunities for internships in the city's top-tier hotels, including St. Regis Hong Kong, Mandarin Oriental, Grand Hyatt and Royal Garden.



- Hospitality students had the chance to visit ALVA Hotel by Royal, Hyatt Centric Victoria Harbour and The Langham after the peak of the pandemic so that they could enrich themselves with the latest state-of-the arts technologies from the industries.



COMMUNITY OUTREACH AND PROMOTIONAL CAMPAIGN

社區推廣與宣傳活動

Expanding Influence on the City

散播愛心 光照社區

Despite the pandemic causing physical separation within communities, the dedicated staff and students of the Institute found innovative ways to engage with the community during this challenging time. They understood the importance of maintaining connections and providing support, even when faced with restrictions. The Institute remained steadfast in its values and sought to strengthen Caritas motto of "Love in the Service of Hope."



Community Outreach 與社區同行

CIHE's Nursing Staff and Students Assisted in the Universal Community Testing Programme

Amidst the COVID-19 pandemic, passionate students and staff of the Institute joined the government-led Universal Community Testing (UCT) Programme. The aim of this programme was to assess the COVID-19 infection situation more effectively. Academic staff members and students from the School of Health Sciences actively participated in the operation of the community testing centre at Hang Hau Sports Centre.

The dedication of CIHE's members was highly recognised as highlighted by a personal inspection of the UCT Centre by the Secretary of Food and Health, Prof Sophia CHAN. She expressed gratitude and provided words of encouragement to CIHE's members for their valuable contribution to the programme. This demonstrated their commitment to public health and their dedication to serving the community during these challenging times.



Establishment of Lions Club Diabetes Service Station

Thanks to a generous donation from Lions Clubs International District 303 Hong Kong & Macao, China, CIHE received a substantial amount of 1.39 million for the establishment of the CIHE Lions Club Diabetes Service Station. This dedicated diabetes centre is located at the Community Health Centre in CIHE and is aimed at providing community health services to individuals at an increased risk of developing diabetes, as well as individuals already diagnosed with diabetes and their caregivers.

The signing ceremony, held on 17 October 2020, was attended by Dr Kim MAK, the president of CIHE, and Dr John LEUNG, the District Governor of Lions Clubs International District 303 Hong Kong & Macao, China. They signed a Memorandum of Understanding to mark the collaboration between the two organisations.

Situated in close proximity to the Tiu Keng Leng MTR station, the CIHE Lions Club Diabetes Service Station benefits from an ideal location for conducting diabetes screening and educational activities. As part of their commitment to the community, CIHE plans to actively involve over 1,000 health sciences students in providing support to the station in the future. This initiative demonstrates CIHE's dedication to community service and their efforts to address the needs of individuals affected by diabetes.



In addition to the active involvement in the field of anti-pandemic and community health promotion, the members of the Institute also made dedicated efforts to bridge gaps within society and engage with their communities. Here are some of the highlighted community engagement activities:



● “3D2N City Walk Exploring the Legacy of Hong Kong” Itinerary Design Competition

Organised by the Rita Tong Liu School of Business and Hospitality Management, the competition aimed to engage secondary students from F4 to F6 across the city. Its purpose was to stimulate their creativity and enhance their understanding of the city's beautiful treasures, enabling them to develop unique travel itineraries.

Through participation in various activities of the event, students will not only be able to widen their exposure in tourism industry, but also enhance their skills in video taking and oral presentations. A total of 12 teams, including 5 secondary schools, participated in the competition. The final presentation took place on 16 August 2021 at the CIHE campus.

• 「你有創意、我地支持 \$1 成本起動創業企劃」

Jointly organised by the Excellent Global Business Centre and the Rita Tong Liu School of Business and Hospitality Management, the creative scheme aimed to actively involve and motivate talented individuals in the city who aspired to start and establish their own brands. The finalists of the scheme were awarded various prizes, including a six-month office space for a nominal fee of \$1, providing them with valuable resources and support to kickstart their businesses.



RESEARCH AND SCHOLARLY ACTIVITIES

研究及學術交流

Advancement in Research

The Institute experienced a fruitful year with significant achievements in research and scholarly activities, marking a notable enhancement in research capability and capacity. These accomplishments serve as a crucial milestone in the Institute's journey towards becoming Saint Francis University, particularly in preparation for the upcoming Institutional Review Exercise by the HKCAAVQ.

During this year, CIHE received 5 competitive Faculty Development Scheme (FDS) awards, totalling \$3 million. These awards aimed to foster the research capability of individual academics within the Institute. Additionally, the Research Grant Council (RGC) granted one competitive Institutional

Development Scheme Collaborative Research Grant (IDS(C)) worth \$6.8 million and one competitive IDS Research Infrastructure Grant (IDS(R)) worth \$3.9 million. The (IDS(C)) grant was awarded to support the development of an Automatic Football Commentary System with Image Recognition and Cantonese Voice Output, while the (IDS(R)) grant was awarded to support the establishment of the Techno-Humanities Research Centre.

These achievements reflect the Institute's dedication to advancing research and innovation, further establishing its position and progress towards its goal of becoming Saint Francis University.

Research Grants and Funding

Part A. External Grants and Fundings

Competitive Research Funding Schemes Applications

On top of the 5 awarded FDS applications, Schools and Departments had made remarkable attempts in applying the FDS. Throughout the year, the Research Office of the Institute handled a total of

- 21 *Faculty Development Scheme* (FDS) applications at \$16.1 m;
- 1 *Institutional Development Scheme Collaborative Research Grant* (IDS(C)) application at \$3.9 m; and
- 1 *Institutional Development Scheme Research Infrastructure Grant* (IDS(R)) application (HK\$5.0 m) in March 2021.

EOC's Funding Programme of Research Projects on Equal Opportunities 2020/21

- Two research proposals on EOC Funding Programme 2020/21 were made and were awarded for a total amount of \$0.1 m.

Part B. Internal Grants and Fundings

The Institutional Research Grant Schemes

To support the research activities in the Institute, the Institutional Research Grant Schemes were launched in 2020/21. There are three funding schemes, namely:

- i. Institutional Development Grant (IDG);
- ii. Institutional Strategic Grant (ISG); and
- iii. Institutional Theme-based Grant (ITBG).

In this year, there are a total of 14 IDG applications, 8 ISG applications and 1 ITBG applications in 2020/21 requesting a total sum of \$ 995,863, \$ 11,289,615 and \$ 2,400,000 respectively. The breakdown of the respective research projects and grants could be found in **Facts and Figures**.

The commitment to excellence and continuous pursuit of research also led to a significant number of applications for ethics approval. The Research and Ethics Committee (REC) reviewed and approved a total of 47 applications for ethics approval in the 2020/21 academic year.

Updated Strategies, Frameworks, Research Centre and Infrastructures

New Research Centre

- Supported by the IDS Research Infrastructure Grant (IDS(R)), a Techno-Humanities Research Centre was established as part of the research infrastructure of the Institute.
- The Techno-Humanities Research Centre is a research unit of CIHE for the interdisciplinary study of techno-humanities in general and in China and Hong Kong in particular.

Updated Research Framework

- The Research Framework was updated in August 2021 and can be found in the Guidelines on Institutional Research Funding Schemes.



Research Related Activities

Other than research projects and newly established research establishments, the Institute also tried other efforts in promoting and enhancing its research capability and capacity.

Lunch Time Research Seminar Series

- Lunch time research seminar series were held to enhance the research capability of the Institute and promote research collaboration across Schools and Departments. The seminars were for all staff and presented by staff from different Schools. The topics of the seminars are as follows:

Date	Speaker(s)	Presentation Title
9/9/2020	Prof CHAN Koon-hung	Agency theory in auditing: Alternative agency relationships for offshore audits and audit quality
23/9/2020	Prof Annie BLIGH	The workshop on preparation for submission to RGC's Competitive Research Funding Scheme 2020/21
7/10/2020	Prof Arran LEUNG	Validation of a back pain
11/11/2020	Prof LAM Ching-man	Raising children in Hong Kong: A mixed- methods study of generational shifts in parental beliefs and practices
9/12/2020	Prof CHAN Sin-wai	Techno-Humanities Research Centre: Now and in the future
13/1/2021	Dr Raees BAIG	Between victimization and demonization: Narratives of Muslim women in Hong Kong
10/3/2021	Dr Dion LEUNG	Can we combat health inequalities among ethnic minorities in Hong Kong?
14/4/2021	Ms TSUI Zoe Wai-king Mr YIP Jeffrey Yuk-chiu	Ethical considerations for offering non- invasive prenatal tests within a public healthcare system: A rule utilitarian perspective
12/5/2021	Prof Francis CHIN	Advancement of NLP with deep learning
9/6/2021	Prof YI Cheong-heon	Interfirm rivalry and competition for new clients and human resources: Evidence from audit markets



Workshops

- The “Workshop on Preparation for Submission to RGC's Competitive Research Funding Scheme 2020/21”, “Workshop on Everything about Institute Research” and “Grant Writing Workshop” were held in September 2020, July 2021 and August 2021 respectively.

Research Grants Council (RGC) Visit

- On 15 April 2021, a virtual visit by the RGC took place, wherein the capability and capacity of research at the Institute were reviewed and assessed. The RGC Monitoring and Assessment Panel, consisting of members from the RGC, participated in this visit. During the visit, the funded IDS(R) project, titled Establishment of Distributed Artificial Intelligence Laboratory for Interdisciplinary Research, was presented alongside other FDS projects. The RGC panel members had a comprehensive understanding of the Institute's research strategy and infrastructure. They conducted multiple meeting sessions with the institutional management and junior academic staff members during their visit.



Publications

- In this academic year, the staff of the Institute demonstrated remarkable productivity by producing nearly 100 academic publications across various formats, including peer-reviewed journals, books, conference proceedings, journals, and book editorships. Several academic units experienced significant growth in their authorship and editorial contributions.
- The Felizberta Lo Padilla Tong School of Social Sciences, in particular, achieved an average of 1.8 refereed publications per staff member annually. Moreover, the school's senior members have taken up editorial roles for two prestigious academic journals. *The International Social Work Journal*, sponsored by the International Federation of Social Workers, International Association of Schools of Social Work, and International Council on Social Welfare, as well as *the Hong Kong Journal of Social Work*, published by the Hong Kong Social Workers Association, are both edited by esteemed members of the Felizberta Lo Padilla Tong School of Social Sciences. These journals enjoy a high reputation within the profession and international academic circles.

Support for Research Paper Publication

- In the 2020/21 academic year, the Institute strengthened its support for research and publication endeavours by providing financial assistance for language editing, publication fees, and other forms of support. This initiative aimed to encourage academic staff to actively engage in research activities, publish their findings, and increase the success rate of article submissions for peer-reviewed publications. A total of 17 journal articles received financial support, amounting to a total cost of \$109,994.47.

In the 2020/21 Academic Year, the Research Office recorded a significant number of publications, including 97 research papers and books, as well as 15 conference papers. These publications demonstrate the Institute's dedication to research and knowledge dissemination during that period.



Scholarly Activities

Despite the challenges posed by the pandemic, the Institute managed to sustain its scholarly activities and even welcomed renowned scholars to the campus for insightful exchanges with its members. Among the notable activities of the year, the Distinguished Speaker Series stood out as one of the most significant events.

Distinguished Speaker Series



● Seminar on Seeing the Meaning of Life from the Angle of Death

Prof Joseph SUNG, Mok Hing Yiu Professor of Medicine of the Chinese University of Hong Kong joined as the guest speaker of the Distinguished Speaker Series on 30 November 2020. With the topic "Seeing the Meaning of Life from the Angle of Death", Prof SUNG shared his personal experience in work and family and encouraged us to illuminate our lives with positive attitudes.

● Hong Kong's Culture - Some of My Casual Observations

Prof LUI Tai-lok, JP, Vice-President (Research and Development) of the Education University of Hong Kong, delivered the talk entitled "Hong Kong's Culture - Some of My Casual Observations" and shared his observed cultural characteristics of Hong Kong as an immigrant and a market-oriented society on 22 March 2021.





COLLABORATION

協作與交流

Co-op and forward 攜手前行

CIHE continues to actively pursue opportunities for collaboration with various stakeholders in order to enhance its offerings and serve the community. In the 2020/21 academic year, the Institute established the following collaborations:

CIHE collaborates with Hospital Authority to launch Nursing Professional Education Programme

CIHE partnered with the Hospital Authority (HA) to introduce the Nursing Professional Education Programme. Upon finishing the four-year PD Nursing programme at HA nursing schools, followed by an additional year of study, students will receive a top-up Bachelor of Health Sciences with Honours Degree (Nursing Stream).



Join forces with Haven of Hope Christian Service to the Enrolled Nursing Programme

CIHE joined forces with Haven of Hope Christian Service (HoHCS) to offer the Higher Diploma in General Nursing programme in the 2021/22 academic year. The programme is a two-year full-time course, and upon completion, graduates will be eligible for the Enrolled Nurse (General) licence. The programme has 50 available places for the first year. A signing ceremony for the memorandum of understanding (MOU) was held on 25 May 2021, in the presence of Dr Kim MAK and Dr LAM Ching Choi, BBS, JP, the Chief Executive

Officer of HoHCS. Under the terms of the MOU, HoHCS will not only provide a significant amount of scholarship to encourage students studying the programme but also recommend their healthcare staff to pursue the diploma. Furthermore, HoHCS's Sister Annie Skau Holistic Care Centre and HoHCS Haven of Hope Nursing Home will offer additional clinical practicum, placement opportunities, and technical guidance.

Cooperation with University of Sydney

The School of Health Sciences has embarked on a collaborative research project with the University of Sydney titled "A strategy to address the WHO and HKSAR physical inactivity problem: Development of a novel and efficient movement screening test to identify adolescents with low levels of physical activity and movement competency for specific intervention." This joint research initiative commenced in June 2021 and aims to foster research partnerships between CIHE and the University of Sydney. The research findings will have societal benefits by enabling early screening to identify adolescents with low levels of physical activity and movement competency, thus allowing for targeted interventions. The signing ceremony for the collaboration between CIHE and the Faculty of Medicine and Health of the University of Sydney took place on 31 May 2021.





Collaborative programme offered by CIHE CAPS and Holy Spirit Seminary College of Theology and Philosophy

The CIHE Centre for Advanced and Professional Studies (CAPS) and Holy Spirit Seminary College of Theology and Philosophy have recently signed a Memorandum of Understanding, officially launching the collaborative programme called Certificate in Religious and Moral Education in Catholic Schools, 天主教學校宗教及道德教育文憑課程。



Train-The-Hospitality-Trainer Hotel and Restaurant Workshop

The Rita Tong Liu School of Business and Hospitality Management partnered with a local secondary school to organise a workshop on hospitality training. This workshop marked the initial effort to support secondary teachers specialising in Tourism and Hospitality Studies. The workshop focused on three key areas: hotel management, restaurant operations, and the fundamentals of wine. Its objective was to broaden understanding of the curriculum and enhance teaching skills by providing insights into contemporary practices and global trends in the hospitality and tourism industry, as seen from a practitioner's perspective.



STUDENT ACTIVITIES AND EVENTS

學生活動與事務

Campus life's goes on

Amidst the challenges posed by the epidemic, the Institute and its dedicated members demonstrated innovation, guaranteeing a seamless campus life experience. They embraced technology to facilitate online learning and interactive virtual engagements. With unwavering commitment, the Institute adopted a "Go Virtual and Stay Normal" approach, ensuring students could continue their education dynamically and meaningfully despite the

constraints of the epidemic. Recognising the significance of social interaction for students' emotional and mental well-being, the Institute prioritised maintaining avenues for social engagement. This approach helped students thrive academically while also nurturing their social connections, contributing to their overall well-being during these unprecedented times.

Go Virtual

CIHE & CBCC Virtual Information Day 2020



The poster features a central illustration of a person with long purple hair and glasses, holding a large orange lightbulb. The lightbulb has the text "FUTURE IN OUR HANDS" inside it. A hand is shown interacting with a smartphone at the bottom. To the left, the text "2020 InfoDay" is written vertically, followed by "專英奇" and "明白課程資訊". To the right, there is a Facebook logo with the text "CIHECBCC" and a search icon. Below this, the text "Facebook 網上直播" is followed by "盡覽學位、副學位、文憑資訊", "獎學金、周大福", and "免息學生貸款計劃簡介". At the bottom right, the dates and times are listed: "11.20 (Fri) 14:00-17:00" and "11.21 (Sat) 10:00-17:00".

2020 InfoDay 專英奇 明白課程資訊

Facebook 網上直播
盡覽學位、副學位、文憑資訊
獎學金、周大福
免息學生貸款計劃簡介

11.20 (Fri)
14:00-17:00
11.21 (Sat)
10:00-17:00

The Information Day was successfully transitioned to a virtual format on 20 and 21 November 2020. Throughout the two-day event, live programme videos, clips, webinars, and virtual chatrooms were available, offering a comprehensive platform to provide information to prospective students. This virtual marathon of activities ensured that students had access to all the necessary details and resources they needed to make informed decisions about their educational journey.

Virtual Induction Programme

To warmly welcome newcomers in the academic year 2020/21, the Caritas Character Building (CCB) Induction programme was successfully conducted through an online platform. Over 1,000 freshmen and their CCB mentors (teachers) participated in four sessions, engaging in orientation activities designed to foster communication and develop an understanding of the core values of Catholic education. The programme facilitated the

establishment of rapport between students and their teachers, laying the foundation for future collaboration. Initially, running the programme online presented challenges as staff had to adapt and utilise Zoom meeting features effectively to engage students and achieve the desired outcomes. However, their efforts ensured a successful and meaningful induction experience for all participants.



Online Elections and Inauguration of Student Organisations / Committees

The usual way of holding student events had to be altered. The Student Affairs Office facilitated online elections for committees of student organisations. Committee members of student organisations made good use of social media to promote their activities, and they shared their yearly plans with all members via QR codes on e-posters.

To mark the official inauguration of student leaders of the Joint Students' Union and two other elected student societies, the Inauguration Ceremonies were held online. Workshops and activities run by student organisations either went virtual or were held face-to-face on the campus with a limited classroom capacity of 40% to comply with the social distancing requirement. Even the dance learning activities were carried out online, and the virtual dance classes enabled students to maintain campus life continuity and keep active in pursuing their interests.



Zooming Home Programme

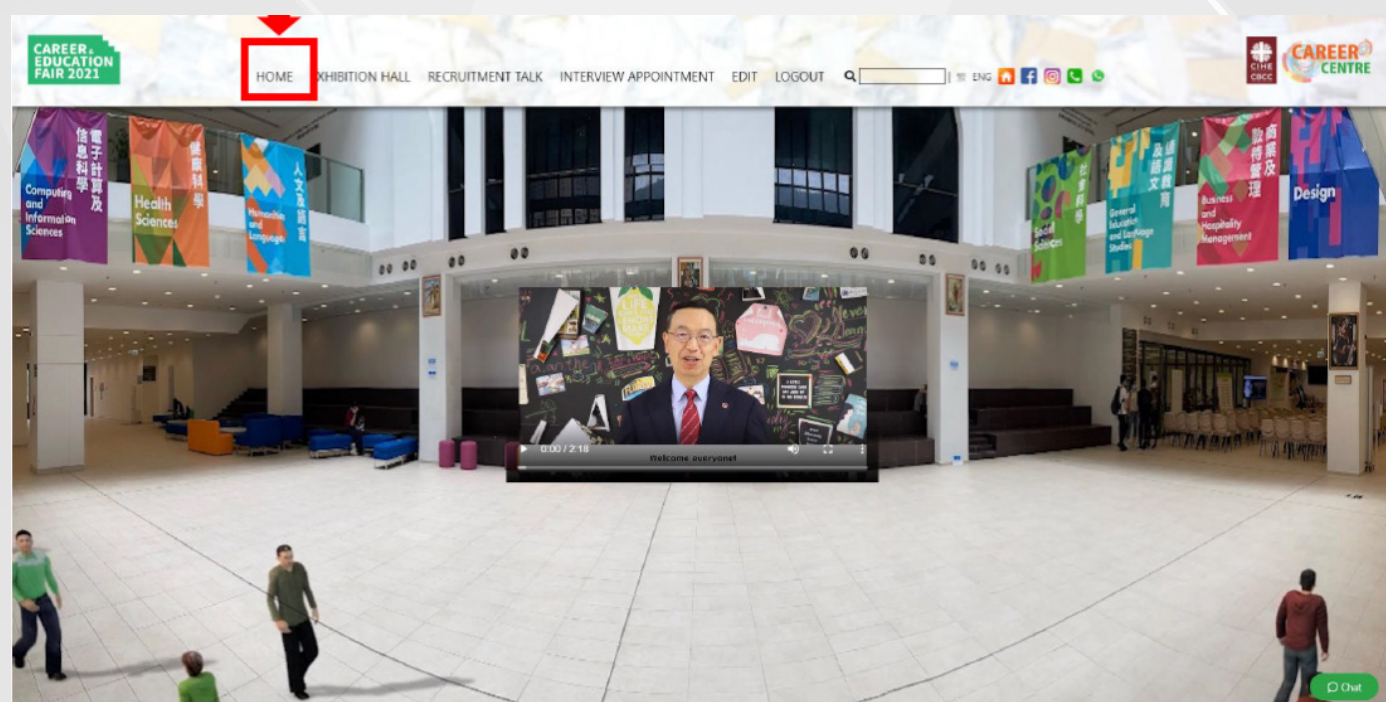
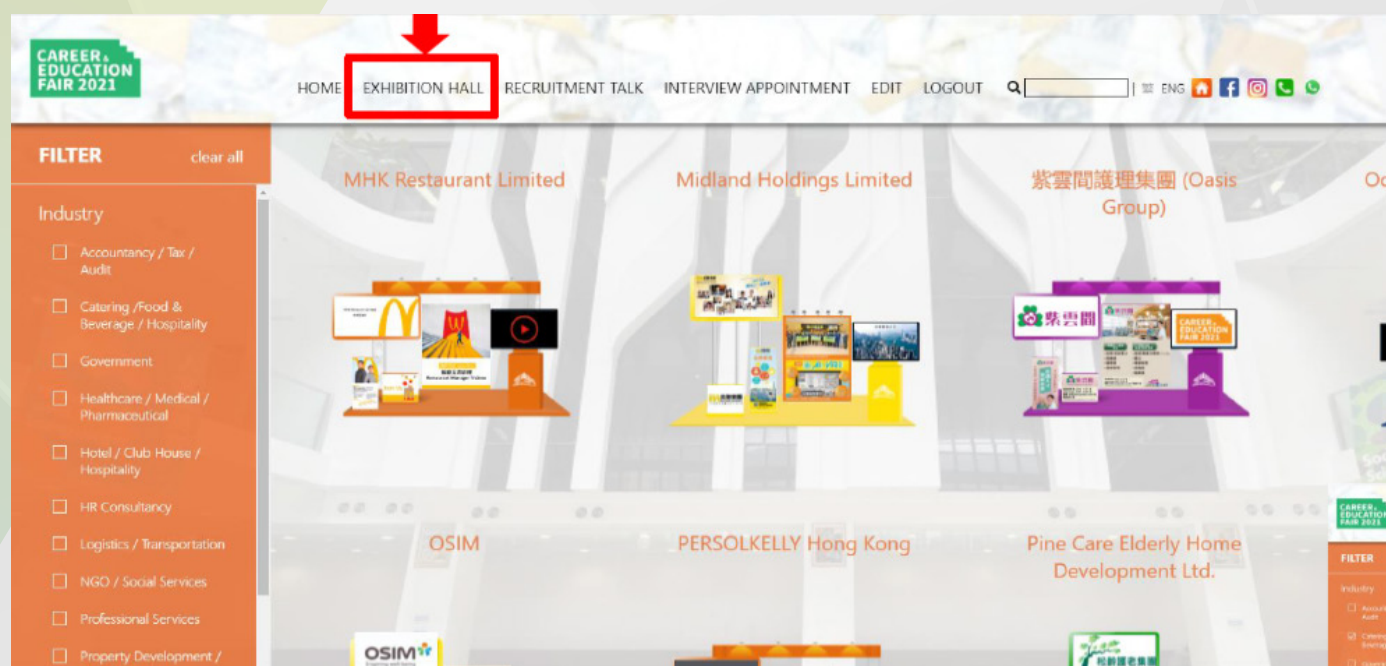
To help students adapt to the online mode of learning and join student activities, more than 100 sessions of a “Zooming Home Program” was launched during lunch breaks and in the evening daily with each session lasting for 15 to 30 minutes. A wide variety of topics were covered, ranging from e-learning tips, success stories of high achievers, music, spirituality, love & sexuality, sharing of life-changing experiences, and the promotion of health of body-mind-spirit, all of which appealed to and engaged student participation.

First Virtual Career and Education Fair and Careers Programmes

To support students in shaping their career paths and furthering their education, the Career Centre took the initiative to organise the inaugural Virtual Career and Education Fair. This innovative event offered students a distinctive platform to connect with potential employers and explore various educational programmes through an interactive online interface. Students could attend recruitment talks, access job listings, review programme information, and even apply for positions. The fair featured an Exhibition Hall where participants could navigate through different industries and employers' booths, interact with promotional materials, and engage with employers of

interest by clicking into their respective booths. The event aimed to facilitate meaningful interactions and connections between students and employers in a virtual setting. Participants also had the chance to search for recruitment talks and participate in real-time or replay completed ones.

Alongside other virtual career programmes, the School of Business and Hospitality Management organised a webinar Career Forum. Esteemed guests shared insights on reshaping business for the digital age, offering valuable guidance for BBA students.



New Training Courses in Career Skills Series

The Career Centre has been proactive in equipping students with essential skills for professional employment. Four comprehensive series of Career Training, namely Career Exploration, Employment Preparation, 7 Habits for Highly Effective People®, and Career Skills were offered. This year, the Career Centre expanded the Career Skills series by introducing five new training courses: Business English, Business Etiquette, Adobe® Photoshop®, Video Editing, and

Labour Law Know It All. These new additions have received positive feedback from students, further enhancing their career readiness. The Career Centre remains dedicated to preparing students for successful entry into the professional world and continues to provide valuable training opportunities.

Stay Normal

Student Helper Programme

The Student Helper Programme (SHP) serves as a valuable "Learn & Earn" platform aimed at involving and recruiting students across all CIHE schools, departments, and units. It provides students with opportunities to enhance their leadership skills, problem-solving abilities, and critical thinking through assisting various academic and administrative entities within the Institute. By participating in the SHP, students have the chance to apply the frameworks and knowledge gained from their programmes in real-world professional settings. This not only helps them explore their career interests but also allows for practical immersion and application of their academic learnings.



- Some schools and departments took initiatives to continue the campus life in various forms during the pandemic. Here are some notable examples:

Wine Tasting, Coffee Tasting and Cupping Activities

To provide students with a diverse and comprehensive learning experience, Certified Hospitality Educator Pansy CHAN organised a Wine Tasting event on 17 November 2020. This allowed hospitality students to gain in-depth knowledge about wine and develop their tasting techniques.

Additionally, on 4 March 2021, Food and Beverage lecturer

Master Chef Ann YUEN orchestrated a visit to a Coffee Laboratory. Through this experience, students immersed themselves in the world of coffee, exploring its diverse flavours and understanding its global significance. They actively engaged in activities such as coffee blending and cupping, honing their skills in crafting high-quality coffee commonly found in restaurants.



Executive Business Lunch

On 8 April 2021, an extraordinary "Executive Business Lunch" took place to display the skills of students who had been studying courses such as Food Production and Food & Beverage Management. Distinguished guests, including the president, Dr Kim MAK and the provost, Prof Annie Bligh, were invited

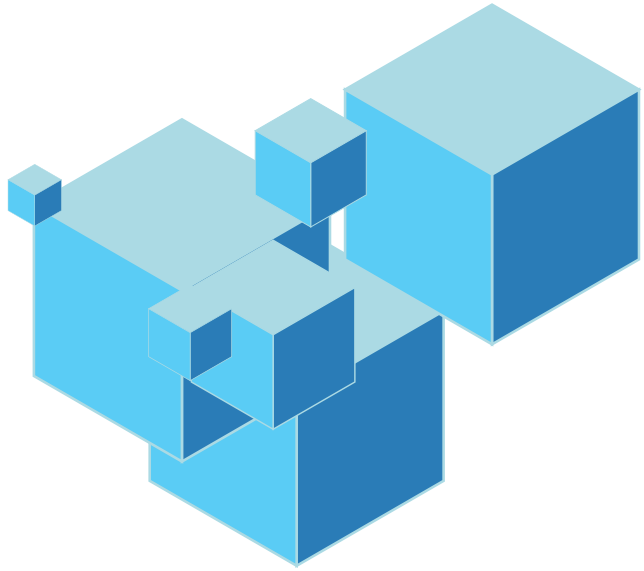
to savour and admire the students' culinary talents. The event provided an opportunity for the students to showcase their abilities and receive recognition from esteemed professionals in the field. It served as a testament to their hard work and the quality of education provided by the Institute.



The online and alternative approaches encouraged innovation in supporting student development. Not only did they provide engaging experiences, but they also helped minimise the impact of the crisis on students' well-being.

FINANCIAL STATISTICS AND DONATIONS

平穩漸進 福杯滿溢



Steady growth with abundant blessings

The Institute had a prosperous year in terms of financials and donations. Thanks to the support of the community, the Institute received substantial donations. In response to the pandemic, generous contributions of anti-pandemic materials were also received from various donors. Furthermore, the Institute's financial performance remained stable, serving as a testament to its accountability and commitment to becoming Saint Francis University. The stable financial situations reflect the Institute's responsible management and contribute to its overall growth and development.

Donations

Achievement in the Research Matching Grant Scheme

Since the launch of Research Matching Grant Scheme (RMGS) by the Government in August 2019, CIHE was proud to be the first institution on par with seven universities achieved the floor of \$50 million for 1:1 donation matching ratio as of June 2020. With the RMGS, donations to CIHE were multiplied to finance the Institute's research and academic development, providing essential facilities, equipment and human resources for CIHE to grow its research capacity in the areas of technology, healthcare, social sciences, humanities, and business.

Donation acknowledgements

In expression of gratitude and appreciation to the donors for their generous support, CIHE established the Saint Francis Thanksgiving Tree display on Level One of CIHE campus. The display showed individual electronic certificates of appreciation for each donor, with creative presentations to disseminate the messages of CIHE's mission and values. Furthermore, various acknowledgement areas, including Saint Francis Signature Wall, Feature Hallways, Feature Walls and Saint Francis Fundraising Promenade, were established to provide donors with choice of acknowledgement according to their giving capacity. These facilities offered space to donors for naming recognition, expression of their support for CIHE and beliefs in positive life values.



● Saint Francis Thanksgiving Tree display on Level One of CIHE campus



● Saint Francis Signature Wall on Level One of CBCC campus



● Feature Hallways

Equipped to fight against the COVID with generous donation

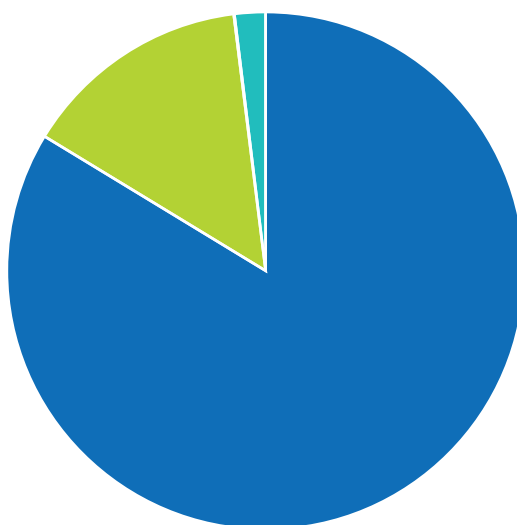
Stricken by the predominant issue of pandemic in 2020/21, the Fundraising Office took the initiative to establish the COVID-19 Emergency Fund for the Institute to tackle the unprecedented challenge. In July 2020, CIHE received a generous donation of \$500,000 from the Hong Kong Jockey Club. This fund was utilised to cover expenses related to epidemic preventive materials and campus sterilisation. To support students during the pandemic, provide essential supplies for practicum, assist those facing financial hardship due to the loss of part-time employment, and foster qualities such as Sustainability, Creativity, Objectivity, Resilience, and Evolvability, Project SCORE was launched. Through this initiative, CIHE has raised \$2.1 million in donations, pledges, and gifts-in-kind for the Emergency Fund, demonstrating the collective efforts to overcome social challenges.

Income and Expenditure

Income

2020/21

\$ 266.26 Million



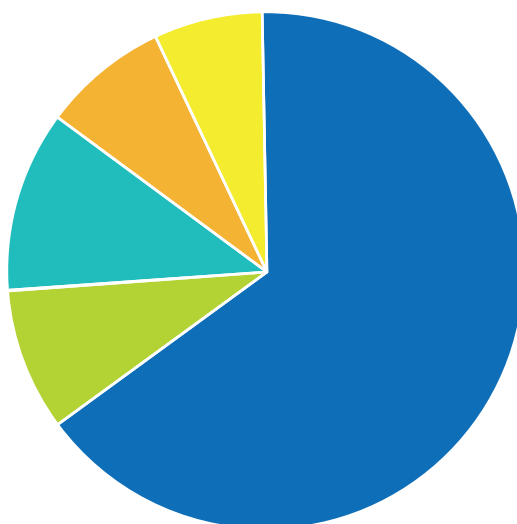
- Dues and Fees
- Donations and Grants
- Other income

Analysis	2020/21	2019/20
Dues and Fees	84%	81%
Donations and Grants	14%	15%
Other income	2%	8%

Expenditure

2020/21

\$ 216.45 Million



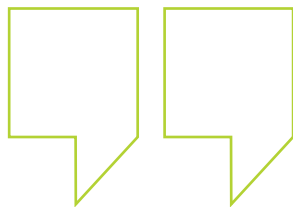
- Personal Emoluments
- Depreciation
- Programme and Scholarly Expenses
- Administrative and Related Expenses
- Premises and Related Expenses

Analysis	2020/21	2019/20
Personal Emoluments	65%	63%
Depreciation	9%	11%
Programme and Scholarly Expenses	11%	10%
Administrative and Related Expenses	8%	8%
Premises and Related Expenses	7%	8%



STAFF DEVELOPMENT AND ENRICHMENT

員工培養與能力提升



The Institute's staff have shown unwavering dedication to excellence. In addition to fostering academic achievements, the Institute has organised a range of development and enrichment programmes for staff members. These programmes aim to enhance their skills and align with the spirit of Caritas Hong Kong, which is centred on "Love in the Service of Hope." By continuously improving themselves, the staff members are better equipped to serve with compassion and make a positive impact in their roles within the Institute.

Caritas HK organised 56 staff development activities, consisting of 44 in-house programmes and 12 collaborative programmes, aimed at enhancing the skills and knowledge of their staff. One notable event was the Symposium on Supporting Students with Special Educational Needs, organised by the Student Affairs Office's Unit for Learning Achievement. The symposium, held on 31 August 2020, attracted over 130 participants.

The event focused on the theme "Embracing Learner Diversity - Building Strengths through Reversing Difficulties with Reflective Experience and Support," emphasising the importance of inclusive education and providing support for students with special educational needs.

FACTS AND FIGURES

數據與統計

Students (Bachelor's Degree Programmes) Admission

Student Admissions Statistics

Total Number of Student Admission (All Years)	804
Total Number of Student Admission (Year 1)	669

Enrolment

Item	All	Male	Female
Total Number of Students	2223	674	1549

Average HKDSE Score of Year 1 Students	16.08
--	-------

Students (Higher Diploma Programmes) Admission

Student Admissions Statistics

Total Number of Student Admission (All Years)	256
Total Number of Student Admission (Year 1)	256

Enrolment

Item	All	Male	Female
Total Number of Students	589	235	354

Average HKDSE Score of Year 1 Students	13.83
--	-------

**Approved Grant for
Institutional Development Grant (IDG)
Institutional Strategic Grant (ISG)
Institutional Theme-based Grant (ITBG)
In 2020/21**

Table 1a. Institutional Development Grant approved in 2020/21.

PI	Title	Duration	Sum (HK\$)
PANG Johnson Chun-yiu	Short-term effects of dry needling with ultrasound guidance on pain and functional disability for osteoarthritis knees: A randomized, double-blinded, placebo and controlled study	01 Jan 2021 – 31 Mar 2023	100,000
WONG Cecilia Shuk-man	Using semantic representation to construct the language model for a corpus-based Cantonese-English Machine Translation System: A pilot study	16 Nov 2020 - 15 Nov 2021	100,000
LIU Tina Xueting	Style-aware Manga Auto-Screening with Semiparametric Learning	16 Nov 2020 – 31 Aug 2021	82,000
YIP Ka-huen	Preventing medical device-related pressure injury for prolonged wearing of respiratory protective equipment by healthcare providers	16 Nov 2020 - 31 Dec 2021	37,300
YEUNG Monly Man- yee	The experience of online near-peer teaching among undergraduate nursing students in Hong Kong: A qualitative study	01 Jan 2021 – 31 Oct 2022	49,122
POON Sara Wai-sha	Development of a mobile health app “care-COPD” for self-care COPD management: An evaluation study	16 Nov 2020 – 31 May 2022	100,000
YI Cheong-heon	Partner career horizon of audit firms and the risk profile of partners' client portfolio	01 Jul 2021 – 31 Dec 2023	99,841
CHEUNG Ada Pui- ling	A study on the perception of the older people and the younger (sandwiched) generation on the family's responsibility in old-age care in Hong Kong	01 Jul 2021 – 31 Aug 2022	36,600
TSANG Diana Yin- ching	Newly graduated nurses' perception of using clinical simulation training to aid for role transition to a professional nurse: A qualitative inquiry	01 Jul 2021 – 31 Mar 2024	50,000
PAU Margaret Mei-lin	The effects of training workshop for cognitively intact community dwelling older people on knowledge of dementia worry in Hong Kong	01 Jul 2021 – 31 Aug 2022	91,000
CHOI Ching-man	Clinical training dosage of Robotic Exoskeleton Assisted Gait Training for improvement of gait parameters, walking performance, balance and health-related benefits in patients with chronic stroke: A Randomized controlled trial	01 Jul 2021 – 31 Dec 2023	100,000

CHU Cheong-hay	A case study of problem online gamblers in Hong Kong during COVID-19	01 Jul 2021 – 31 Dec 2023	50,000
CHUNG Yee-ha	An exploratory study on the use of sedative-hypnotics by people with insomnia	01 Jul 2021 – 31 Dec 2023	50,000
CHU Cheong-hay	A study of gaming behaviour and addiction among children and adolescents in Hong Kong	01 Jul 2021 – 31 Dec 2023	50,000

Table 1b. Institutional Strategic Grant approved in 2020/21

PI	Title	Duration	Sum (HK\$)
CHAN Sin-wai	VisualRecipe: An online visual translation system for Chinese cookbooks	01 Jun 2021 – 30 Nov 2024	1,962,000
PANG Johnson Chun-yiu	A strategy to address the WHO and HKSAR physical inactivity problem: Development of a novel and efficient movement screening test to identify adolescents with low levels of physical activity and movement competency for specific intervention	01 Dec 2020 – 31 May 2024	1,999,994
WONG Yu-cheung	Employment decisions and the well- beings of the low-income older workers upon retirement age	01 Dec 2020 – 30 Nov 2023	1,280,700
SMITH Graeme Drummond	Academic resilience in undergraduate students: An international longitudinal study	01 Dec 2020 – 30 Jun 2024	638,337
CHAN Sin-wai	User-centricity in Chinese-English dictionary compilation	01 Dec 2020 – 30 Nov 2023	1,928,584
CHAN Anthony Hing-hung	Image restoration analysis with deep learning model optimization: Case study of Turin Shroud	01 Jul 2021 – 31 Dec 2023	692,000
CHAN Thomas Yin- hong	Implementing differentiated instruction for college-level ESL learners: A Case-based action reserach study in Hong Kong	01 Jul 2021 - 31 Oct 2023	854,000
SIU Wan-chi	Deep learning baseline design for imae to image processing	01 Jun 2021 – 30 Jun 2024	1,934,000

Table 1c. Institutional Theme-based Grant approved in 2020/21

PI	Title	Duration	Sum (HK\$)
Prof CHAN Sin-wai	Setting up the Techno-Humanities Research Laboratory and its Facilities	1 Dec 2020 - 31 Jan 2024	2,400,000



Caritas Institute of Higher Education
明 愛 專 上 學 院